

Thursday May 6, 2010 Paramount Conference Venue
www.bypeterandpauls.com/paramount/
 10:00 am – 4:00 pm 222 Rowntree Dairy Road, Woodbridge, ON L4L 9T2



15 Thornlea Road
 Thornhill, ON L3T 1X2
 tel (416) 338-2219
 fax (905) 709-0764

bespatial@urisaoc.ca
www.urisaoc.ca



Thursday May 6, 2010 Paramount Conference Venue
www.bypeterandpauls.com/paramount/
 10:00 am – 4:00 pm 222 Rowntree Dairy Road, Woodbridge, ON L4L 9T2

Experience leading edge geospatial technology and user applications and participate in technical and user presentations. Members, including many representatives from public, private and educational organizations working with GIS-related technologies, are showcasing a wide range of innovative geospatial technology applications and solutions. Your attendance at Be Spatial 2010 helps to contribute to our strong growth. Thanks!

8:15	EASTWOOD ROOM: URISA OC – ANNUAL GENERAL MEETING		
9:00	EASTWOOD ROOM: PRESIDENT'S WELCOME & OPENING REMARKS & VENDOR LIGHTNING ROUND		
	TAYLOR ROOM	EASTWOOD ROOM	MONROE ROOM
9:30	Region of York: Focus on Effectiveness: The Geomatics Rebranding Approach	Environics Analytics: Using Spatial Data to Identify Motivators for Green Behaviours	Jury Konga: Open Data – Challenges and Opportunities for the GeoCommunity
10:00	Town of Oakville: Property Information - Challenge & Opportunity for Integration Enterprise Systems	Ministry of Economic Development and Trade: Select Ontario – an Innovative Solution in Economic Development	City of Toronto: Delivering Geospatial Intelligence to Election Services
10:30	HUDSON/SINATRA ROOMS: EXPO OPENS & COFFEE BREAK		
	TAYLOR ROOM	EASTWOOD ROOM	MONROE ROOM
11:00	County of Simcoe: The rebirth of maps.simcoe.ca – Deploying Geocortex Essentials to 16 member municipalities	Pelmorex Media Inc. – The Weather Network: Enterprise GIS Database Development and Interoperability Issues	City of Mississauga: Mississauga Data: A New Approach to Planning Department Information Management
11:30	KEYNOTE PRESENTATION: DR. COLIN ELLARD		
12:30	HUDSON/SINATRA ROOMS: LUNCH		
1:15	AWARDS		
	TAYLOR ROOM	EASTWOOD ROOM	MONROE ROOM
1:30	SKE Inc.: Spatial Cloud Computing	Teranet Inc.: GeoWarehouse as the foundation to your Spatial Data Requirements	City of Barrie: Discover Barrie – A GIS Portal for Residents, Visitors and Businesses
2:00	Golder Association: Wind Farm Visual Resources Assessment	iLOOKABOUT: iLOOKABOUT Streetscape Imagery integrated into enterprise applications	City of Oshawa: City of Oshawa's Map – based Digital Record System for Asset Management
2:30	ESRI Canada: Asset Management for Municipalities – geospatial applications for Municipalities	Google: Searching for ways to organize and find location-based information	Municipality of Learnington: GIS at the Municipality on all levels and GIS services long term goals
3:00	EASTWOOD ROOM: MAP GALLERY, PASSPORT AWARD, PRIZES & CLOSING REMARKS		
3:45	EVENT & EXPO CLOSES		

URISA-OC's Be Spatial 2010 program and expo topics will include information management, standards, research, visualization, World Wide Web, business process, community and asset management—topics that will ensure something for everyone in attendance. The presentations will educate and entertain and make certain that everyone 'becomes spatial'.

URISA-OC is pleased to present Dr. Colin Ellard as the keynote speaker for this year's event. Dr. Colin Ellard with his background in psychology and research for Immersive Virtual Environments (RE.LIVE) will presents his thoughts based on his experiences.

Enjoy your day and thank you for your interest in supporting Ontario's geospatial community!

KEYNOTE



OPEN GEOSPATIAL CONSORTIUM

Dr. Colin Ellard

*Professor of Psychology, University of Waterloo
Director, Research Laboratory for Immersive Virtual Environments (RE.LIVE)*

Dr. Ellard will discuss “Where Am I? Why We Can Find Our Way to the Moon, But Get Lost at the Mall”, and provides an interesting view point of space within the context of psychological, philosophical, and anthropological viewpoints. “How do we as humans manage the challenges of finding our way through space?” he asks. As it turns out: not very well. “When I started to do research with people, I was amazed at how poorly they did in comparison with gerbils, rats and mice!” says Ellard. Compared to animals, humans are remarkably — and sometimes disastrously — unsophisticated in their navigational ability. Cats can always find their way home, it seems, but without the aid of crumb trails, maps and GPS tracking devices, human beings have a strong tendency to get lost.

20 YEAR MEMBER CLUB

CURRENT MEMBERS AT TIME OF INDUCTION

2010 INDUCTEES

Garry Bezruki
City of Waterloo

Mary Elder
Norfolk County

2009 INDUCTEES

Geoff Bannon
Elections Ontario

Donna Edwards
Pegasus Multimedia Design

Robert Gaspirc
City of Toronto

Garry T. Hunter
Hunter GIS

Wolfgang M. Skeries

Doug Stanlake
City of London

2008 INDUCTEES

Jerry Crawford
Toronto EMS—Emergency Medical Services

Greg General
City of Burlington

Derek Hewitt
City of Burlington

John Houweling
ESRI Canada Limited

B.C. Mahadeva (Dave) Kumar
City of Burlington

Andy Mackie
Teranet Inc.

Dave Powell
City of Oshawa

2007 INDUCTEES

Sandra Crutcher
URISA—Ontario Chapter/ City of Toronto

Ron Jaros
Region of Peel, PL

Jury Konga
Town of Richmond Hill

George Lysenko

Alex Miller
ESRI Canada Limited

Louis Milrad
Miller Thomson LLP

DECADE MEMBER CLUB

10 YEAR MEMBERSHIP CERTIFICATES WILL BE PRESENTED DURING THE ANNUAL GENERAL MEETING

2010 INDUCTEES

Annaliese Vollick
Town of Newmarket

Barry Kelly
ESRI Canada Limited

Dean Thompson
City of London

Irene Shouftas
City of Waterloo

Jim Silburn
Region of Durham

John Knowles
First Base Solutions Inc.

Maureen Mountjoy
Association of Ontario Land Surveyors

Mike Hausser
City of Cambridge

Patricia Morphet
City of Toronto

Patrick Sun
ESRI Canada Limited

Susan Chin Snelgrove
York Region

Tim Walden
Region of Waterloo

Virgil Martin
Region of Waterloo

Walter Gasparini
Region of Waterloo

ABOUT URISA-OC

WWW.URISAOC.CA

URISA (Urban & Regional Information Systems Association) is the premiere non-profit organization for the use and integration of spatial information technologies to solve challenges in government agencies and improve the quality of life in urban and regional environments. The Ontario Chapter has over 500

individual and group members from all levels of government, GIS applications vendors, consultants, educators, students, and business professionals that provide educational programs and services related to spatial information systems and integrated solutions.

THANK YOU VOLUNTEERS

Volunteers are the lifeblood of URISA. The Ontario Chapter has been so successful because of

the hard work and dedication of our volunteers, committee members, and directors. We could not operate without the time and talent that our members freely provide. And in return, volunteers receive many benefits, including professional networking opportunities and professional growth. Volunteering is a great way to network with peers and colleagues in the GIS and IT industry. It is a great way to meet new people and establish professional relationships.

We encourage all members to become involved with the Chapter - positions are available in many areas. Please consider volunteering on a standing committee.

If you are interested in volunteering or would like more information, please e-mail: info@urisaoc.ca



iLOOKABOUT ilookabout.com

iLOOKABOUT StreetScape helps explore, map and manage communities with visual data. Built expressly for professionals who rely on accurate and authentic visual data for decision making and operational efficiency, iLOOKABOUT StreetScape's smart images provide dramatic cost savings and significantly enhance customer service. Essential data for essential services, the iLOOKABOUT StreetScape solution includes a comprehensive database of native, geo-coded images, for highest integrity and a suite of simply intuitive software tools that create high utility, smart images. **BOOTH: 117**

Intergraph intergraph.com/sgi/

Intergraph is the leading provider of spatial information management software. Security organizations, businesses and governments worldwide rely on the company's spatial technology and services to make better and faster operational decisions. Intergraph's customers organize complex data into understandable visual representations, creating intelligent maps, managing assets, protecting critical infrastructure and people worldwide. **BOOTH: 108**

iPLANcorp iplaninc.com

iPLANcorp Technology Group is the GIS Technology software applications division of iPLANcorp, a full-service planning practice. We're home to specialists in GIS information technology, geography, and systems engineering. iPLAN Technology's GIS-IT specialists engineer leading-edge software products like the iQuestor line of software products including our new Survey Document Manager. We also create customized software applications pertaining to geographic information and mapping services for our customers. **BOOTH: 109**

Latitude Geographics Group geocortex.com

A division of Latitude Geographics Group Ltd., Geocortex provides a suite of proven products, services and knowledge that organizations can use to deliver effective, successful web-based mapping using ESRI's ArcGIS Server and ArcIMS. With success stories across North America, we help clients create top-notch web-based GIS implementations. **BOOTH: 118**

LIO Land Information Ontario lio.mnr.gov.on.ca

Land Information Ontario (LIO) works to ensure that all of Ontario's land information is well-managed, accessible, integrated, and affordable by those who need it. Land Information Ontario is achieving this vision through the creation of data sharing arrangements; the provision of tools and services to catalogue, discover, view and share geospatial data; and by encouraging data standards. **BOOTH: 100**

MDA Geospatial Services mdacorporation.com

MDA's Geospatial Services Inc. (MDA GSI) is a leader in the provision of Earth observation data, information products and services from aerial platforms, and commercially available radar and optical satellites. MDA GSI also holds the exclusive Canadian rights for the Pictometry® Oblique and Ortho Imaging System. The Pictometry System utilizes high resolution, geo-referenced image libraries, providing users with detailed information solutions not available with any other imagery product. The viewing software makes it easy to overlay your existing GIS data, or you can choose to seamlessly integrate the imagery within your existing GIS application. Pictometry is ideal for municipal property management and is used extensively in the security, public safety, GIS and planning disciplines. **BOOTH: 113**

Orion Technology Inc. oriongis.com

A division of Rolta Canada Limited, Orion Technology's enterprise GeoSpatial Fusion™ solutions enable a web-based, geospatially integrated view of critical information and work processes, leading to intelligent, timely decisions. Built with OnPoint™, these solutions provide easy access to business data isolated in numerous data structures. Results can be quickly realized by engaging our consulting, implementation and technical services. **BOOTH: 106**

SKE Spatial Knowledge Engineering Inc. skeinc.com

SKE's Spatial Cloud Computing (SC2) solution, GeoPortal, provides Enterprise GIS in the "cloud". Data, technology, software and business data integration are all provided as a web service and made accessible anywhere, at any time. SKE's GeoPortal uses Google maps and imagery, ArcGIS Server (SDE) databases, and all the computing horsepower you need to map-enable any or all your business systems in a completely secure and scalable architecture. Winner of eleven awards already, including GTEC Gold and Showcase Ontario, GeoPortal is rapidly becoming a technology of choice for organizations large and small. **BOOTH: 107**

	TAYLOR ROOM	EASTWOOD ROOM	MONROE ROOM
9:30	<p>SPEAKER: NANCY PROUT, York Region TITLE: Focus on Effectiveness: The Geomatics Rebranding Approach ABSTRACT: York Region Geomatics has undergone dramatic evolution in the first decade of the 21st century expanding infrastructure capacity of user with a focus on creating efficiencies across the corporation. This presentation challenges the GIS practitioner out of the technical world and into York Region Geomatics initiative to "re-brand", Focus on Effectiveness. The approach to rebranding includes development of a plan through extensive consultation, and results in elimination of techno-speak, and effective, communicated service delivery practices. Re-branding, simplifying, communicating may not seem central to GIS development, but is essential to maintaining institutional relevance and recognition.</p>	<p>SPEAKER: EMMA FLOOD, Environics Analytics TITLE: Using Spatial Data to Identify Motivators for Green Behaviours ABSTRACT: Spatial data can help to uncover motivations, and in turn, help target communication efforts more appropriately to different audiences. In this case study, hybrid vehicle buyers will be profiled using geodemographic data to understand better the motivations that influence different types of hybrid buyers.</p>	<p>SPEAKER: JURY KONGA TITLE: Open Data—Challenges and Opportunities for the GeoCommunity ABSTRACT: Open Data is not new but the spotlight on it and particularly, the citizen focus on geospatial data is new. The rising awareness of the value and importance of open data is also part of a larger Open Government movement. These trends will continue and impact every level of government which provides both challenges and opportunities for the overall GeoCommunity. In particular, the spotlight is on local government with Open Data already in operation in Vancouver, Toronto, Edmonton and expected shortly in Ottawa.</p>
10:00	<p>SPEAKER: MARC BAILA, Town of Oakville TITLE: Property Information—Challenge and Opportunity for Integration of Enterprise Systems ABSTRACT: Town of Oakville has started a project regarding property information attempting to how determine it is used and where it is stored. Property information is one of the most important types of information in municipal government. It is structured into three broad categories: address information, assessment data, and registry information. The threefold classification demonstrates the importance of property information for a municipality because every business process relies on it. The project identifies what steps are required toward establishing a unique source for property information at Town of Oakville. The scope of the presentation is to present findings of this initiative and open the floor for discussion with participants in the audience who likely face similar issues in their organizations.</p>	<p>SPEAKER(S): ILKA ELISABETH GÜTTLER, (MEDT) TITLE: Select Ontario—an Innovative Solution in Economic Development ABSTRACT: Ontario's Ministry of Economic Development & Trade (MEDT) needed an effective Marketing solution (economic development solution) to showcase the unique investment opportunities in the Province. The Select Ontario GIS tool provides a one stop shop for valuable information, detailed statistics and current data about available properties, community demographics, and labour force characteristics, workforce skills, and business clusters. This business tool enables investors and site selectors to make timely and informed decisions about where to locate their business projects in Ontario. The end result is a distinctive web-based site-selection tool that features rich and integrated information on economic and investment opportunities throughout Ontario.</p>	<p>SPEAKER: SCOTT WEBB, City of Toronto TITLE: Delivering Geospatial Intelligence to Elections Services ABSTRACT: Toronto Election Services manages the municipal election process along with, by-elections, referenda, appointments to Council and School Board Trustee vacancies. Since amalgamation in 1998, ongoing work efforts between Toronto Election Services and the Geospatial Competency Centre have integrated GIS tools and technologies with numerous facets of the electoral process. These include redistricting and precincting, managing the logistics of holding elections, supplying information to voters both before and after an election, and analyzing election results. This presentation showcases how numerous tasks associated with elections have become improved and streamlined with the integration of GIS technologies.</p>
11:00	<p>SPEAKER: GRANT HUDOLIN, County of Simcoe TITLE: The Rebirth of maps.simcoe.ca—Deploying Geocortex Essentials to 16 Member Municipalities ABSTRACT: After 10 years of success, and challenges, with an ArcIMS based solution the County of Simcoe makes a rapid migration to ArcGIS Server and Geocortex Essentials. Learn about how this transition was made. Learn why Geocortex Essentials is well suited for deploying multiple unique site instances to internal departments and the County's 16 member municipalities. Learn about the architecture and configuration that supports over 100 registered users to secure sites of Essentials and hundreds of daily visitors to public sites.</p>	<p>SPEAKER: LAURA CERQUOZZI, Pelmorex Media Inc.—The Weather Network TITLE: Enterprise GIS Database Development and Interoperability Issues ABSTRACT: This presentation will focus on the development of an enterprise-wide GIS system and data interoperability issues surrounding the project. The Weather Network receives data from several data providers in several formats. There was a need to consolidate the data into one centralized system. In addition to user editing, the system required the ability to provide multiple outputs in many different formats for web, mobile and television applications. Interoperability tools from Safe Software were used to allow The Weather Network to integrate disparate datasets and produce multiple formats at the click of a button. The end result of the project is a streamlined workflow, minimized duplication of work, and overall performance increases which allow the team to quickly create and implement new products for all mediums.</p>	<p>SPEAKER: STEVE CZAJKA, City of Mississauga TITLE: Mississauga Data: A New Approach to Planning Department Information Management ABSTRACT: The City of Mississauga recently reorganized their Policy Planning Division establishing a new Section titled, Information Planning. This presentation will look at the inventories that are managed by Information Planning Section, the products/services provided by the group and the new approach of information management</p>

EXPO MAP GALLERY

Each year, Be Spatial participants exhibit their best cartographic works in the Map Gallery.

The Map Gallery is an annual tradition featuring outstanding cartographic works of art by GIS technology users from across the province. You've worked hard on creating a map for your organization and now is your chance to show off your maps to GIS professionals and colleagues from around the province!

PAST MAP GALLERY PRIZE WINNERS

2009 Award Winners

GOLD AWARD
Norfolk County—Norkolk County Official Plan

2008 Award Winners

GOLD AWARD
City of Hamilton—GIS Services Group – Bike Routes, Trails and Parks

SILVER AWARD

York Region Geomatics—York Region Immigration Profile Census 2006

2007 Award Winners

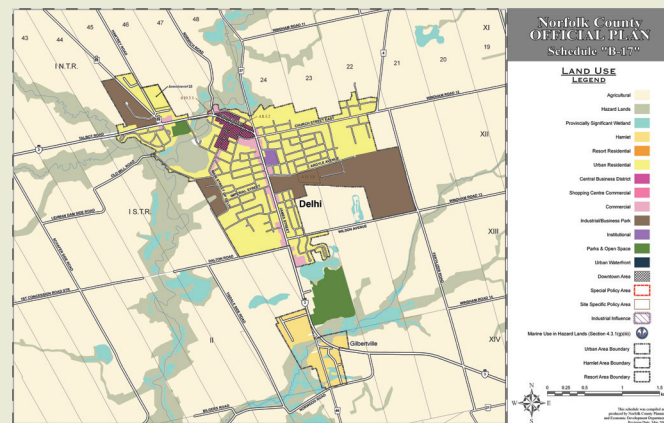
GOLD AWARD
Town of Oakville—GIS Services Group, Municipal Address Atlas

SILVER AWARD

Region of Durham—Durham Region Transit Bus Shelter Map 2007

2006 Award Winners

GOLD AWARD
Upper Thames Conservation Authority



	TAYLOR ROOM	EASTWOOD ROOM	MONROE ROOM
1:30	<p>SPEAKER: HUGH WILLIAMS, SKE Inc. TITLE: Spatial Cloud Computing ABSTRACT: Infrastructure as a service (IaaS) – also called cloud computing – can provide a cost-effective way to meet many if not all of an organization’s computing needs from financials to email to CRM and so on. Can “spatial” cloud computing also benefit an organization, and if so, how? SKE Inc. will discuss their approach to providing enterprise GIS as a service with examples from the Ontario government.</p>	<p>SPEAKER: RYAN POYNTZ, Teranet TITLE: GeoWarehouse as the foundation to your Spatial Data Requirements ABSTRACT: GeoWarehouse links various sources of both spatial and non-spatial data into a seamless integrated web application facilitating a one-stop shop for our users to access Land Registry data, property mapping, Bing maps, aerial imagery and streetscape data. Teranet has designed the GeoWarehouse application to better meet the needs of land professionals. Integrating third party applications (I.e. Bing maps, Demographic information, streetscape data) have remained the focus to enhance the core functionality of this product.</p>	<p>SPEAKER: JAMES ZAZULA & SCOTT MORROW, City of Barrie TITLE: Discover Barrie—A GIS Portal for Residents, Visitors and Businesses ABSTRACT: Staff from the City of Barrie will discuss and demonstrate the new Discover Barrie Interactive Mapping Portal focusing on the user interface/tools and the associated decisions for their implementation. Attendees will gain insight as to the technology, data configuration, customization decisions and associated website statistics that brought about these choices and how they affect conceptual user groups.</p>
2:00	<p>SPEAKER: PAUL PENGELLY, Golder Associates Ltd. TITLE: Wind Farm Visual Resources Assessment ABSTRACT: Paul Pengelly of Golder Associates Ltd. looks at the analysis of visual impact resulting from the construction and operation of Wind Farm projects in Ontario. Unlike many assessable impacts of a wind farm, visual resources are difficult, if not impossible to quantify. Paul uses qualitative 2D analysis and 3D simulations to assist with public consultation and the Renewable Energy Application process.</p>	<p>SPEAKER: ROD MILLER, Director of Sales of iLOOKABOUT TITLE: Integration of Imagery within Client Systems ABSTRACT: iLOOKABOUT StreetScape is a visual data intelligence product intended to address the geospatial needs of the business professional. Each high-resolution image is captured with a digital SLR 12 megapixel camera and geo-coded using GPS integrated with the vehicle to record the specific location. The iLOOKABOUT StreetScape image database is compatible with all major mapping applications including those available from ESRI, Intergraph, Bentley, Autodesk, Pictometry, Microsoft, Google, Yahoo. iLOOKABOUT continues to build its image database for major population centres in North America and the European Union and to license its image data to businesses in a variety of industries. iLOOKABOUT also offers Virtual Tour products for viewing images in different applications.</p>	<p>SPEAKER: CYNTHIA FERREIRA, City of Oshawa TITLE: City of Oshawa’s Map-based Digital Record System for Asset Management ABSTRACT: As part of the municipality’s asset management strategy, the City of Oshawa has recognized that in order to better track their civil assets they needed a better way to manage the records that pertain to those assets. The Engineering Services Branch is the manager of close to 40,000 records that were previously maintained in various formats and in various locations. Over the past year, Infrastructure Services, a division of the city’s Engineering Services Branch has been working to transform the traditional paper-based record system into a digital format that will be accessible to the entire Corporation via a soon to be deployed desktop map solution.</p>
2:30	<p>SPEAKER: BARRY KELLY, ESRI Canada TITLE: Asset Management for Municipalities—geospatial applications for Municipalities ABSTRACT: By efficiently managing asset information and ensuring data consistency in a scalable environment our organization is in a prime position to share this information with mobile workers, project costs and efficiently complete short and long term planning. Will discuss how to create awareness across your organization by utilizing and organizing this rich information to manage day-to-day operations. We will take a look at templates and projects available to optimize workflows. <ul style="list-style-type: none"> Operational Awareness Dashboard Capital Improvement Plans (CIP) for Short and Long term planning Lifecycle Costing/Sustainable infrastructure Mobile Intelligence Citizen Service </p>	<p>SPEAKER: JOHN MACDONALD, Google TITLE: Searching for ways to organize and find location-based information ABSTRACT: With the world’s technical information doubling every two years, we are constantly searching for ways to organize and find the information that is important to us. Where information is location-based, Google strives to make it easy for people to view, understand, and make decisions about this information. Google Earth and Maps are applications that enable users to view, understand, and make decisions about location-based information, optimized for use with private data. This discussion will provide an overview of these solutions and their practical application in the marketplace today.</p>	<p>SPEAKER: JASON SCOTT, Municipality of Leamington TITLE: GIS at the Municipality on all Levels—GIS Services Goals for the Long Term ABSTRACT: The Municipality of Leamington uses GIS in many ways throughout the entire organization. It can be in terms of asset management for PSAB, mapping accidents to solve traffic issues, or creating maps for council reports. The main way GIS has been integrated on an enterprise level is through our interactive mapping site, which is hosted by the County of Essex. This site is utilized by all departments continuously and allows them to accomplish many tasks that weren’t possible before. The presentation would demonstrate how this site has become more efficient and the value in having partnerships with other organizations, such as the County of Essex. Examples of accomplishments this partnership has obtained are the interactive site, our new Enterprise License Agreement with ESRI, and the Cityworks Server software. The goal for GIS at the Municipality is to make things more efficient for all staff and the public, and how to obtain that with limited amounts of money from being a small municipality.</p>

U-OC AWARDS

AWARDS WILL BE PRESENTED TO THE SELECTED ORGANIZATIONS AND INDIVIDUALS.

Innovation in GIS Challenge

Best Public Sector GIS Challenge

Best Web-GIS Challenge

GIS Leadership Award

Map Gallery Awards

Student Bursary opportunity

Please contact programs@urisaoc.ca for more detail

AOLS Association of Ontario Land Surveyors aols.org



The Association of Ontario Land Surveyors is expanding its Geographic Information

Management Branch. The Surveyors Act was changed to provide Geographic Information Managers with the professional designation of Ontario Land Surveyor (O.L.S.) and Ontario Land Information Professional (O.L.I.P.). **BOOTH: 105**

Cansel Ontario cansel.ca



Cansel is the largest distributor of GPS/GIS Mapping technology in Canada, and an exclusive dealer of

Trimble Mapping GPS. We provide sales, rentals, repair, training, and technical support at nine locations nationwide. Cansel offers the largest selection of land based measurement equipment including high-end optical survey instruments, GPS, construction lasers, machine control, accessories, and field supplies. **BOOTH: 115**

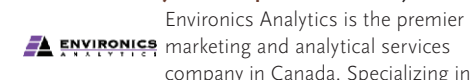
DMTI Spatial dmtispacial.com



We are mapping technology and address management experts. Our geospatial solutions enable clients

to harness the power of geography to better understand their customers, optimize resources, realize opportunities and maximize profitability. DMTI Spatial is the creator of CanMap®, a nationwide, precision-built street map and routing database and GeoPinpoint™ Suite, an innovative suite of geocoding software. **BOOTH: 116**

Environics Analytics Group environicsanalytics.ca



Environics Analytics is the premier marketing and analytical services company in Canada. Specializing in

geodemographic segmentation, site modelling and custom analytics, the Toronto-based company provides businesses with data-driven market insights to help them find and keep their customers. It has the most experienced team of micromarketing experts in Canada. They are a member of the Environics Group, a unique alliance of companies dedicated to providing intelligent research, analytics and communications. **BOOTH: 111**

Fanshawe College art-design.ca/fanshawec.on.ca



The Bachelor of Applied Arts: Integrated Land Planning Technologies degree is a four year

program which includes three co-operative education work placements. It offers a unique blend of landscape design, urban and regional planning, GIS, CAD and graphic presentation. The program integrates traditional design skills with current and emerging analysis and presentation technologies. The GIS & Urban Planning Technology diploma program is aimed at providing technical and design skills for land development and resource management industries in both rural and urban communities and from both private and public sector perspectives. Three major computer software technologies: i.e. GIS (Geographical Information Systems), CAD (Computer Aided Design) and graphic presentation are learned using case studies and actual land development projects. Students acquire skills to build and maintain spatial (geographic) data bases, plan and design land development projects within a community context and prepare graphic presentations. This program emphasizes work experience and is two years in length, comprising of four academic levels and two cooperative work terms. **BOOTH: 110**

First Base Solutions firstbasesolutions.com



First Base Solutions provides a comprehensive suite of geospatial products and services, including

aerial imagery acquisition and orthorectification, production of 3D models, GIS data conversion and custom applications for web-based map and geo-data access. First Base Solutions has also been appointed as Google’s first geospatial partner in Canada, enabling the sale and implementation of the full suite of Google Earth solutions. **BOOTH: 103**

GCC Toronto Geospatial Competency Centre toronto.ca



GCC – Geospatial Competency Centre (formerly Land Information Toronto-LIT) is a unit within the

Information & Technology Division, City of Toronto. The mandate of GCC is to provide geospatial data and technology support to all City of Toronto programs and to promote geospatial information and technology in a corporate business environment. This mandate is achieved by integrating three business functions: Products and Support, Geospatial Data Management, and Geospatial Applications and Technology. **BOOTH: 102**

GITA gita.org



The Geospatial Information & Technology Association (GITA) is

the professional association and leading advocate for anyone using geospatial technology to help operate, maintain, and protect infrastructure, which includes organizations such as utilities, telecommunication companies, and the public sector. Through industry leading conferences—along with research initiatives, chapters, membership, and other programs—GITA provides education and professional best practices.

Golder Associates golder.com



Golder is an industry-leading, full-service environmental management, mining and geotechnical

engineering consulting firm. Founded in 1960, Golder’s group of companies has grown to be one of the world’s leading consulting firms by providing technical expertise in applied earth sciences and engineering. **BOOTH: 114**

Hunter GIS hunter-gis.com



Hunter GIS provides low-cost solutions incorporating rapid implementation for municipal,

utility and resource management sectors. Our Asset Management and Tracking Systems, as well as many other solutions, provide the client with the option for a web hosted or in-house solution. **BOOTH: 112**